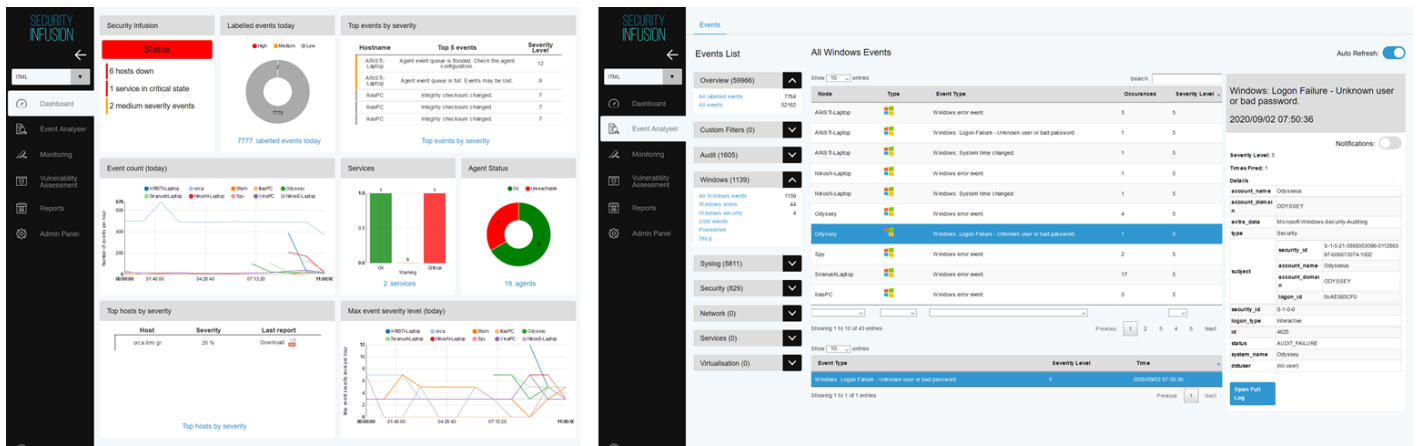


# ITML Security Infusion: IT Operations Monitoring & Event Management



Cloud based solution with local data collection agents. Edge deployment option.

Thorough event management and reporting

Real time operational management and alerting

IT performance monitoring and inventory

Network port scanning and vulnerability assessment

Detailed forensic analysis for hosts, services, and processes

## A new hybrid IT paradigm

Convergence of ICT infrastructure and its migration to the cloud are creating a new, hybrid model of IT where cloud deployment is the default option. This new reality requires visibility of IT operations, effective monitoring and alerting, and continuous risk assessment and compliance.

## Monitor ICT Operations and Events

Security Infusion aligns IT operations management with risk mitigation in a simple and intuitive manner. The application is a comprehensive web-based monitoring platform for operational awareness and resource visibility. Resources and services are surveyed in real time and information is collected and stored for further study through forensic analytics.

## Data Driven, Cloud based

Management of the monitored infrastructure and its operations is performed through the cloud; edge deployment is optional for specific cases. Secure data streams ensure that vital information is collected, processed, measured, and presented in a timely and compact fashion, when needed, as needed.

Advanced agent design encompassing machine learning technology makes time and data growth an ally for better situational awareness and response.

## A Control Baseline for IT operations

Security Infusion incorporates ITML’s expertise in data collection and IT management to realize a Control Baseline of ICT operations, with integrated risk mitigation and regulatory compliance capabilities. The software acts as a bridge that binds IT operations monitoring with event management in one single, simple to deploy, low cost, cloud native, SaaS solution.

### Main Functions

#### Dashboard

Aggregates important information to provide an overview of the monitored infrastructure’s status and a central navigation panel.

#### Event Analyzer

Surveillance and data gathering of events on monitored systems (hosts) and network, including file integrity monitoring, log monitoring, rootcheck, and process monitoring.

#### Monitoring

Services, processes, performance, real time inventory. Historical data for IT forensic analysis. Operational awareness and tool for compliance alignment

#### Network Scan

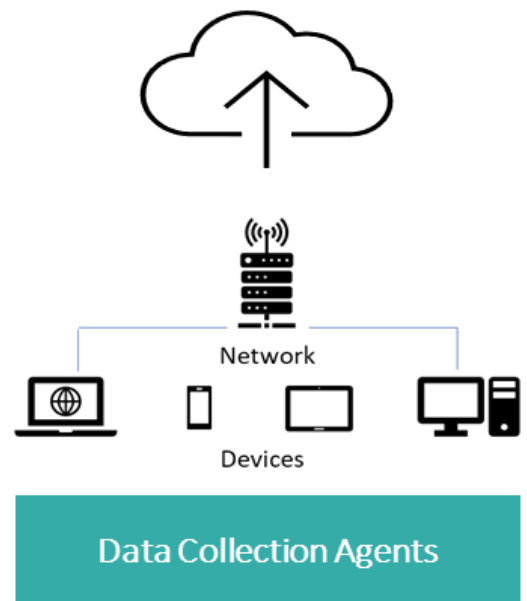
Vulnerability assessment & report. IP based port scanning

#### Reports

Event reporting based on applied filters. Online view and downloadable pdf report generator.

#### Admin Panel

Agents installation and configuration, filters & reports creation, monitoring & alerts configuration



In addition to its native cloud deployment, Security Infusion also has a local (edge) deployment option. It runs on Docker containers orchestrated by Kubernetes. This architecture is optimal for cloud operation, high availability, and effective administration.

**Get more:** Contact ITML for more about Security Infusion and how you can benefit to manage control and secure your ICT Assets.

[www.itml.gr/security-infusion](http://www.itml.gr/security-infusion)

[info@itml.gr](mailto:info@itml.gr)

© Copyright 2020 ITML IKE. The information contained herein is subject to change without notice. The only warranties for ITML products and services are set forth in statements accompanying such products and services. Nothing herein should be construed as constituting an additional warranty. ITML shall not be liable for technical or editorial errors or omissions contained herein.